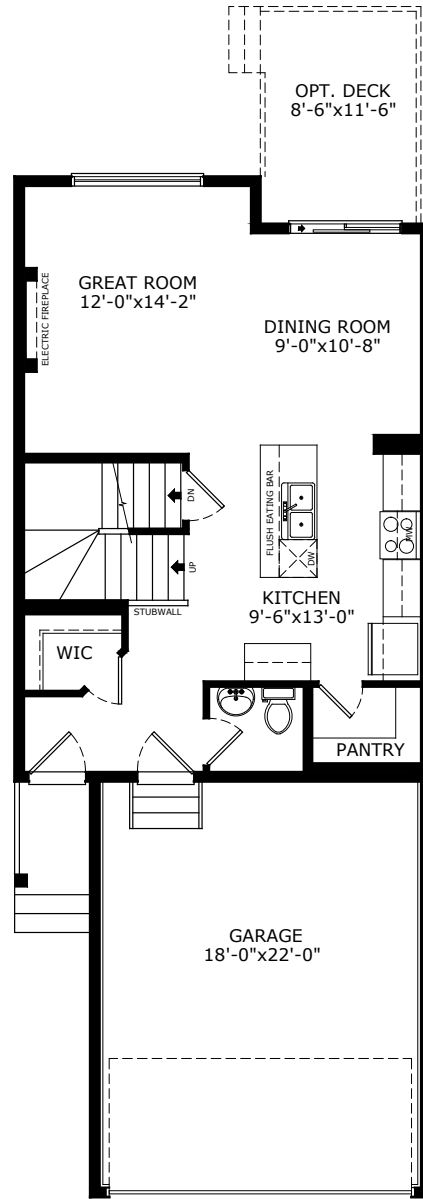
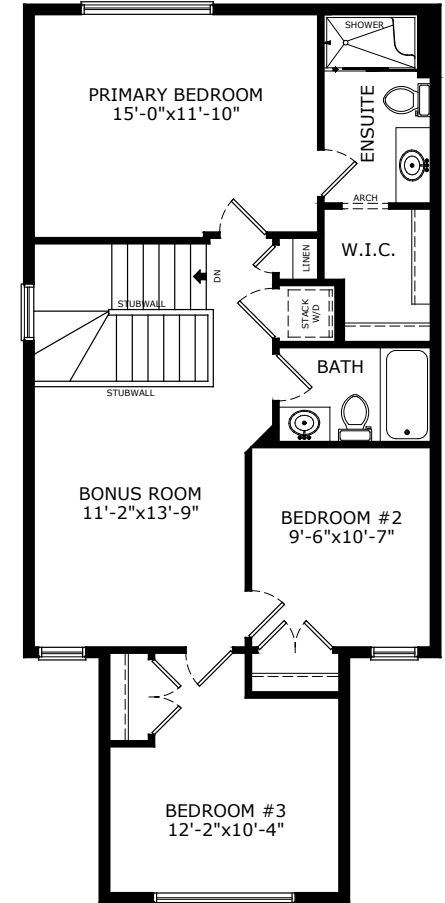


1545 SQ FT
3 BEDS
2.5 BATHS

NOAH



MAIN: 682 SQ FT



MAIN: 863 SQ FT

Sterling HOMES

A QUALICO® Company

ELEVATIONS



CRAFTSMAN



FARMHOUSE



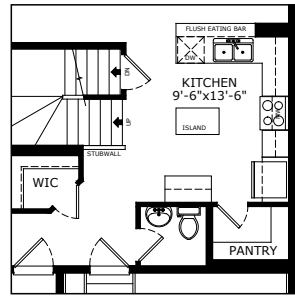
MODERN



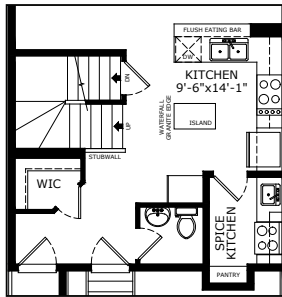
PRAIRIE

MAIN FLOOR OPTIONS

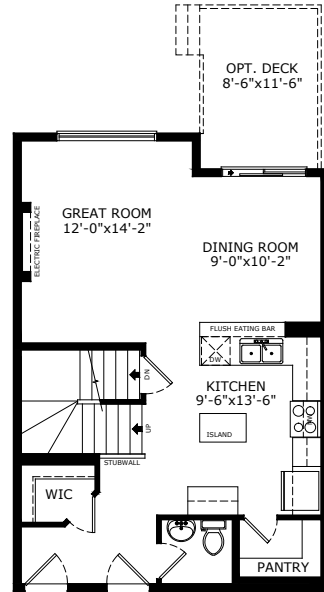
OPTIONAL KITCHEN WITH
OPTIONAL EXECUTIVE KITCHEN



OPTIONAL KITCHEN WITH
OPTIONAL SPICE KITCHEN

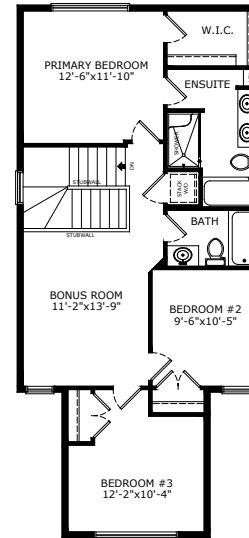


OPTIONAL KITCHEN

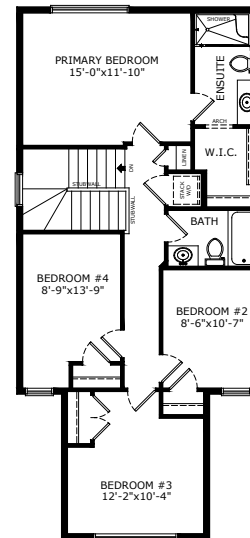


UPPER FLOOR OPTIONS

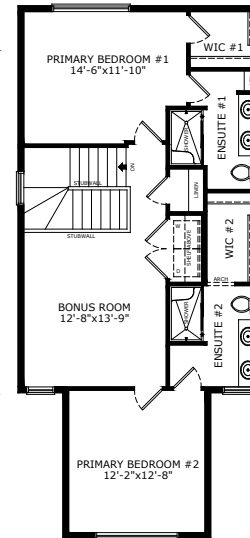
OPTIONAL ENSUITE



OPTIONAL 4 BEDROOMS

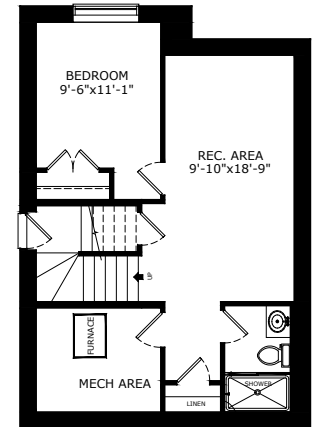


OPTIONAL 2ND PRIMARY
BEDROOM

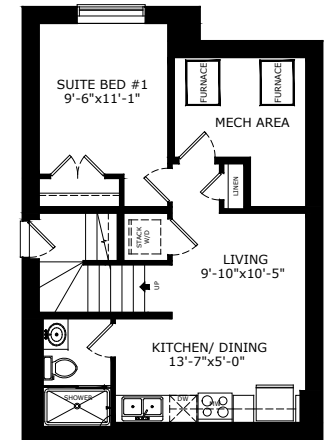


BASEMENT OPTIONS

STANDARD 463 SQ FT



1 BEDROOM
"LEGAL SUITE" 665 SQ FT



*Legal Suite availability varies by community and municipal regulations.



Scan here
for floorplan
options and
more

Build Your Life

STERLINGCALGARY.COM